

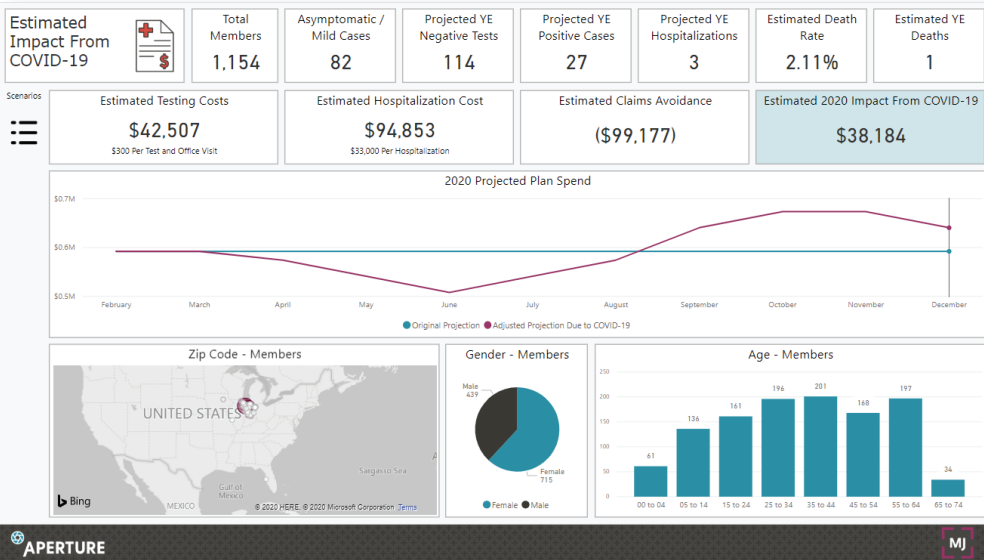
# COVID-19 CLAIMS IMPACT MODEL



MJ Insurance has developed a proprietary analytical tool to measure and project the **cost impact** of COVID-19 on a health plan

MJ is leveraging APERTURE® to produce the results into an **actionable** format

Data sets are updated **daily** based on the COVID-19 Data Repository published by Johns Hopkins

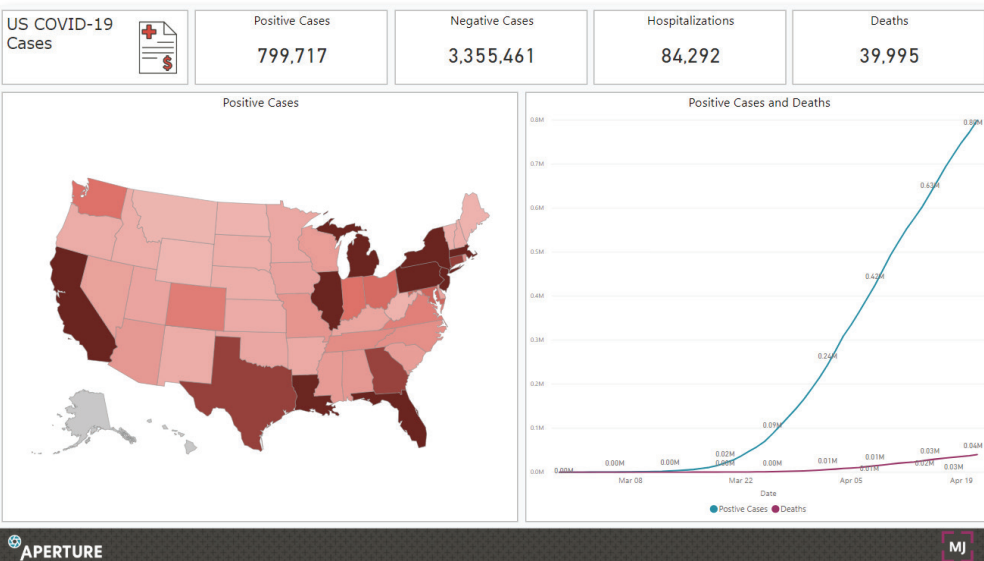


Each dashboard is customized to your company based on the following:

- Demographics of the population
  - Geographic location
  - Age
  - Gender
  - Comorbidities
- Projected health care spend in 2020

The model will forecast for the company:

- Positive and negative COVID-19 test results
- Hospitalizations
- Fatalities
- 2020 Cost impact from COVID-19



Visit [apertureanalytics.com/covid-calculator](https://apertureanalytics.com/covid-calculator) for more information.

